

# E400AJPn Electric Boom Lift



## SPECIFICATIONS

### Performance:

|                             |        |
|-----------------------------|--------|
| Platform Height (max.)      | 12.19m |
| Working Height              | 14.19m |
| Platform Rotation Angle     | 180°   |
| Jib Rotation Angle          | 180°   |
| Jib Raise Angle             | 86°    |
| Jib Lower Angle             | 55°    |
| Jib Articulation Range      | 141°   |
| Maximum Horizontal Outreach | 6.83m  |
| Platform Capacity           | 230kg  |
| Slewing Angle               | 360°   |
| Continuous Slew             | No     |

### Dimensions:

|                    |       |
|--------------------|-------|
| Stowed Length      | 6.71m |
| Stowed Height      | 1.97m |
| Overall Width      | 1.50m |
| Wheelbase          | 2.01m |
| Ground Clearance   | 0.13m |
| Platform Width     | 1.22m |
| Platform Length    | 0.76m |
| Overall Jib Length | 1.24m |
| Tailswing          | 0.13m |

### Power:

|              |             |
|--------------|-------------|
| Power Source | Electric DC |
| DC Voltage   | 48V         |
| DC Power     | 370 Amp h   |

### Travel:

|                     |                   |
|---------------------|-------------------|
| Tyre Size           | 25 x 7 x 12       |
| Tyre Type           | Solid/Non-marking |
| Inside Turn Radius  | 0.86m             |
| Outside Turn Radius | 3.15m             |
| Gradeability        | 30%               |

### Weights and Capabilities:

|                         |         |
|-------------------------|---------|
| Hydraulic Tank Capacity | 15 Ltr  |
| Operating Weight        | 6,759kg |



50 ft  
(15.24 m)

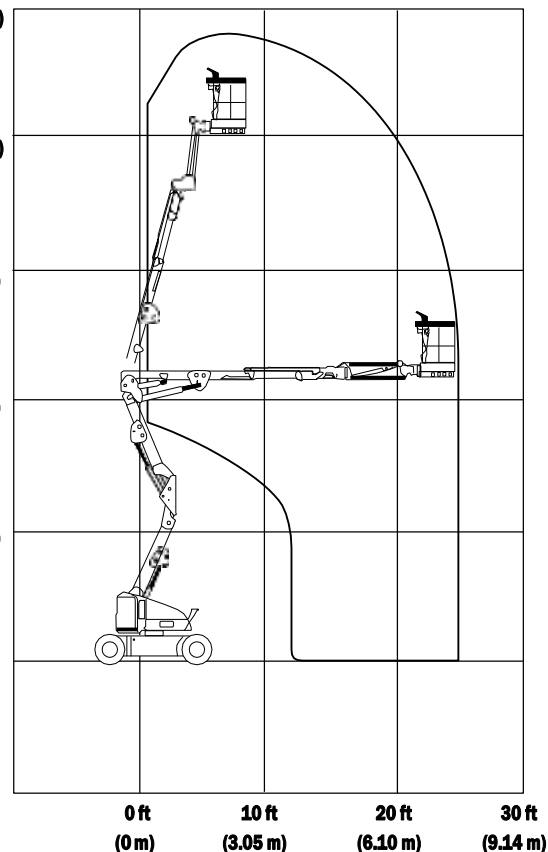
40 ft  
(12.19 m)

30 ft  
(9.14 m)

20 ft  
(6.10 m)

10 ft  
(3.05 m)

0 ft  
(0 m)



0 ft  
(0 m)

10 ft  
(3.05 m)

20 ft  
(6.10 m)

30 ft  
(9.14 m)

## KEY SELLING POINTS

- Smooth control, proportional electric drive, with two speed ranges
- Proportional lift and swing controls at the platform
- Jib boom and basket rotate
- Jib PLUS feature allows jib boom to rotate either side of centre
- Cylinder boots protect cylinder rods from overspray and contaminants
- Non-marking solid tyres
- Multi axis 4 degree level sensor
- Plug in JLG analyser at platform and base to indicate system functions for servicing and adjustment
- Narrow width chassis for tight areas

